



LONDON

STATION COURT TOTTENHAM

YEAR ROUND

STANDARD RESIDENCE 18+



ACCOMMODATION

Station Court is a secure, modern, purpose-built student residence, recently refurbished to a high specification. The accommodation is made up of single en-suite bedrooms arranged in clusters of 6. Each cluster shares a fully fitted and newly renovated kitchen. Bedrooms have private bathroom and are furnished with a study desk, drawers and a chair. Station Court features a range of communal facilities and social spaces for quiet study and for hanging out with friends.

LOCATION

Station Court is in the North London area of Tottenham, with supermarkets, cafes and shops nearby, and less than five minutes' walk from Seven Sisters London Underground station. From here, the Victoria Line takes you to the centre of London in under 15 minutes. This part of London is home to Tottenham Hotspur Football Club, and is close to the wide open spaces of the Lee Valley. Nearby Tottenham Hale station also connects you to London Stansted Airport in under an hour, ideal for holidays and trips back home.



QUICK INFO



ROOMS
Single



BATHROOM TYPE
En-suite



MEALS
Self-Catering



BEDDING & TOWELS
Bedding - included
Towels - not included



LAUNDRY FACILITIES
Onsite



INTERNET
Free WiFi



CLEANING SERVICE
Communal kitchens
cleaned weekly



DISTANCE FROM SCHOOL
32 minutes by tube to
Holborn Station



DISTANCE FROM CENTRAL LONDON
15 minutes by tube to
Oxford Circus



ON-SITE ASSISTANCE
24-hour reception staff
onsite



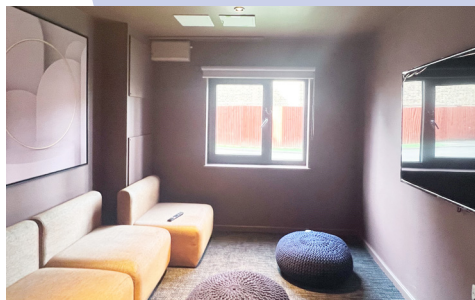
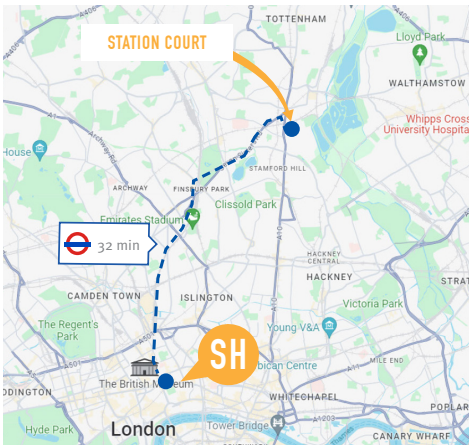
DISTANCE FROM OTHER LOCATIONS
1 hour to Heathrow Airport
35 minutes to Victoria
Coach Station
22 minutes to Saint
Pancras (Eurostar)



OTHER FACILITIES
Social spaces, study
rooms, cinema
room, coffee shops,
restaurants and
supermarkets nearby.



CHECK-IN/CHECK OUT
Check-in from 3pm. Check-out before
10am on day of departure. Flight details
are required two weeks pre-arrival.



PRICING

PRICE PER WEEK

PRIVATE ROOM, EN-SUITE

£340

ADDRESS

158 High Road,
London, N15 4NU

